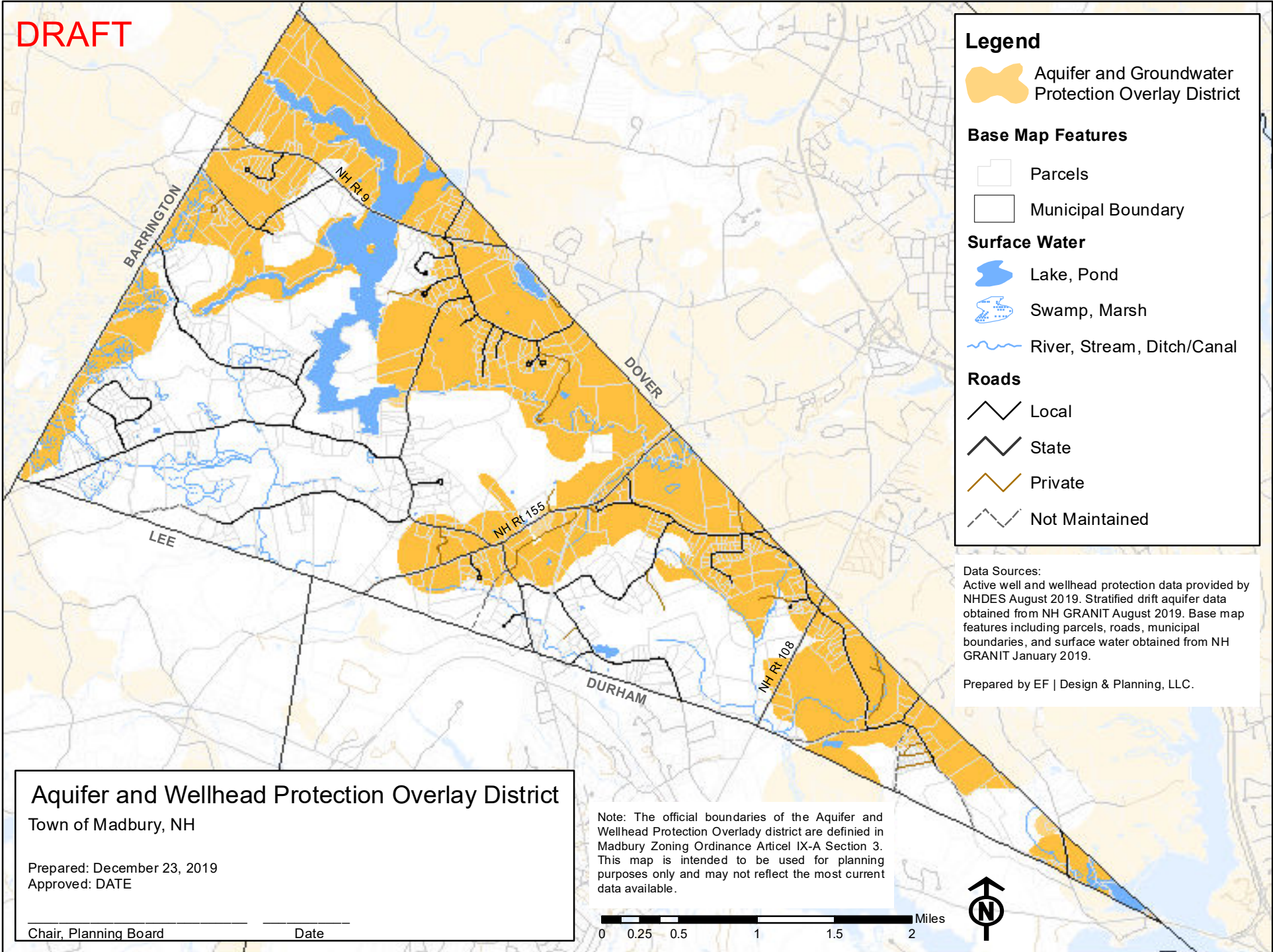


DRAFT



**Legend**

- Aquifer and Groundwater Protection Overlay District

**Base Map Features**

- Parcels
- Municipal Boundary

**Surface Water**

- Lake, Pond
- Swamp, Marsh
- River, Stream, Ditch/Canal

**Roads**

- Local
- State
- Private
- Not Maintained

Data Sources:  
 Active well and wellhead protection data provided by NHDES August 2019. Stratified drift aquifer data obtained from NH GRANIT August 2019. Base map features including parcels, roads, municipal boundaries, and surface water obtained from NH GRANIT January 2019.

Prepared by EF | Design & Planning, LLC.

**Aquifer and Wellhead Protection Overlay District**  
 Town of Madbury, NH

Prepared: December 23, 2019  
 Approved: DATE

Chair, Planning Board \_\_\_\_\_ Date \_\_\_\_\_

Note: The official boundaries of the Aquifer and Wellhead Protection Overlay district are defined in Madbury Zoning Ordinance Article IX-A Section 3. This map is intended to be used for planning purposes only and may not reflect the most current data available.

